



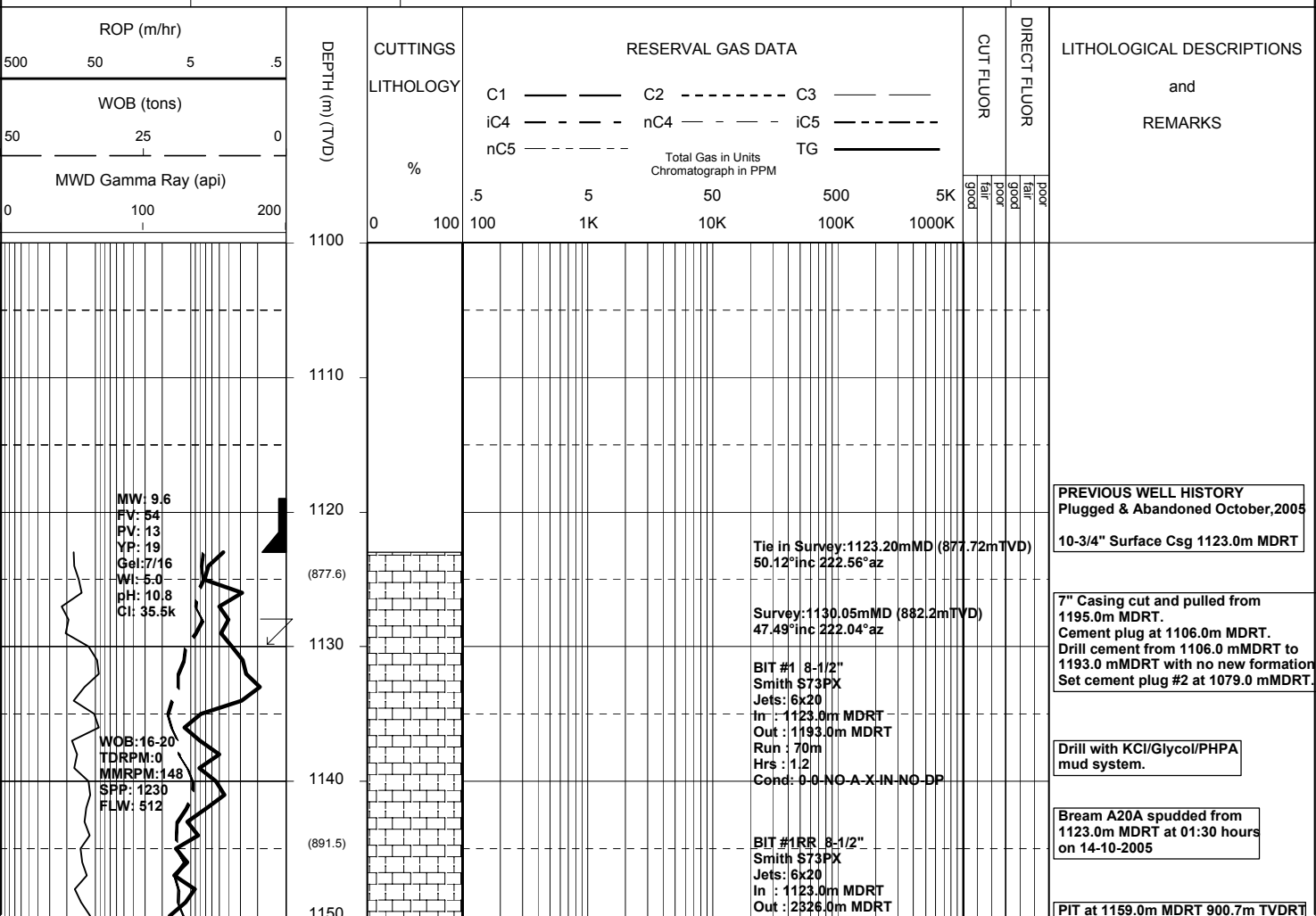
# MASTERLOG

## BMA A20A



GENERAL	POSITION	HOLE / CASING INFO	DATE / DEPTH	ENGINEERS
Country : AUSTRALIA	GDA Co-ord X : 147 46 20.056 E		Spud Date : 14-10-2005	Mark Smith
Permit : VIC L13	GDA Co-ord Y : 38 29 58.899 S	8-1/2" Hole to 2326.0 m	Total Depth Date : 17-10-2005	V.B. Jagarlamudi
Field : Bream	MGA Co-ord X : 567338.25mE		Total Depth : 2326.0m	Steve Oades
Basin : GIPPSLAND	MGA Co-ord Y : 5738458.02mN	10-3/4" Surface Csg at 1123.0 mMDRT	True Vertical Depth : 2029.7m	
Well Type : DEVELOPMENT	RT to MSL : 32.82 m	7" Production Csg at	Log Scale : 1/ 500	
Rig Name : NABORS 453	RT to Sea Bed : 92.22 m			

ABBREVIATIONS		LITHOLOGY LEGEND				ENGINEERING LEGEND	
MW Mud Weight	WOB Weight on Bit (klbs)	CLAYSTONE	MARL	BRYOZOA	CARB FRAGMENT	CASING SHOE	WIRELINE LOGS
FV Funnel Viscosity	RPM Rotations Per Min	SILTSTONE	LIMESTONE	RADIOLARITES	QUARTZITE	LINER HANGER	MDT POINTS:
PV Plastic Viscosity	FLW Flow Rate (gpm)	SST: F - V FINE	DOLOMITE	ECHINOIDS	INTRUSIVES	BIT CHANGE	PRESSURE ONLY
YP Yield Point	SPP Pump Pressure (psi)	SST: MEDIUM	CHERT	CORALS	GLAUCONITE	DEVIA. SURVEY	SAMPLE
Gel Gel Strength	RR Re-Run Bit	SST: COARSE	CONGLOMERATE	FORAMINIFERA	PYRITE	SWC UNRECOV	SEAL FAILURE
WL Water Loss	TG Trip Gas	SHALE	COAL	LITHIC FRAGMENT	CEMENT	SIDEWALL CORE	TIGHT
KCl Potassium Chloride	CG Connection Gas					CORE	
Cl Chlorides	BG Background Gas						
Incl Inclination	DGP Drilled Gas Peak						
Az Azimuth	MM Mud Motor						



Run : 1203.0m  
Hrs : 54.4  
Cond: 2-2-WT-A-X-1-ER-TD

WOB: 5-10  
TDRPM: 60  
MMRPM: 153  
SPP: 1500  
FLW: 528

Survey: 1158.55mMD (902.6mTVD)  
41.35°inc 225.01°az

CALCILUTITE:lt gy-med lt gy,silty  
i/p g/t CLSLT,tr foram,frm-mod hd,  
sbbiky.

WOB: 5-20  
TDRPM: 60  
MMRPM: 153  
SPP: 1850  
FLW: 605

99 / 1 / Tr

1180

(921.6)

Survey: 1186.68mMD (924.5mTVD)  
36.10°inc 221.21°az

CALCILUTITE:lt gy-med lt gy,silty  
i/p g/t CLSLT,tr foram,frm-mod hd,  
sbbiky.

99 / 1 / Tr

1200

(937.8)

WOB: 7-12  
TDRPM: 62  
MMRPM: 178  
SPP: 2050  
FLW: 613

Survey: 1215.77mMD (948.2mTVD)  
35.19°inc 227.08°az

99 / 1 / Tr

1220

(954.1)

CALCILUTITE:lt gy-med lt gy,silty  
i/p g/t CLSLT,tr foram,frm-mod hd,  
sbbiky.

1230

WOB: 6-22  
TDRPM: 60  
MMRPM: 177  
SPP: 2075  
FLW: 608

Survey: 1244.76mMD (972.1mTVD)  
33.70°inc 227.07°az

99 / 1 / Tr

1240

(970.6)

1250

(987.5)

Survey: 1273.63mMD (996.5mTVD)  
30.94°inc 226.91°az

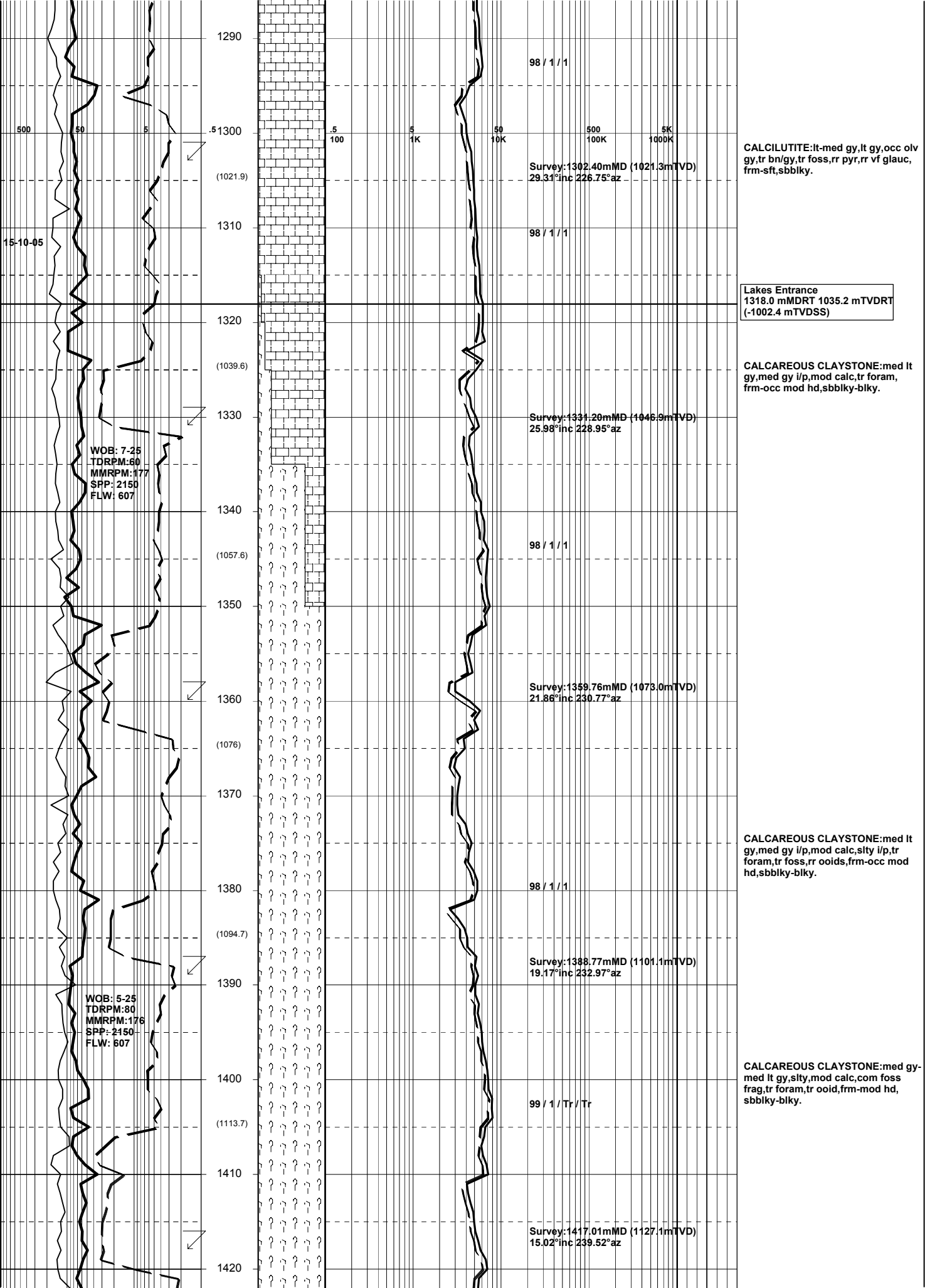
CALCILUTITE:lt gy-med lt gy,silty  
i/p g/t CLSLT,tr foram,tr bnsh/gy  
foss,frm-mod hd,sbbiky,tr sbfiss.

1270

1280

(1004.6)

MW: 9.6  
FV: 76  
PV: 30  
YP: 44  
Gel: 10/22  
WI: 4.0  
pH: 11.7  
Cl: 35.5K



1290

98 / 1 / 1

500 50 5

1300

100 1K 10K 100K 1000K

**CALCILUTITE:**lt-med gy,lt gy,occ olv gy,tr bn/gy,tr foss,rr pyr,rr vf glauc, frm-sft,sbbiky.

Survey:1302.40mMD (1021.3mTVD)  
29.31°inc 226.75°az

(1021.9)

1310

98 / 1 / 1

15-10-05

**Lakes Entrance**  
1318.0 mMDRT 1035.2 mTVDRT  
(-1002.4 mTVSS)

1320

**CALCAREOUS CLAYSTONE:**med lt gy,med gy i/p,mod calc,tr foram, frm-occ mod hd,sbbiky-blky.

(1039.6)

1330

Survey:1331.20mMD (1046.9mTVD)  
25.98°inc 228.95°az

WOB: 7-25  
TDRPM:60  
MMRPM:177  
SPP: 2150  
FLW: 607

1340

98 / 1 / 1

(1057.6)

1350

Survey:1359.76mMD (1073.0mTVD)  
21.86°inc 230.77°az

1360

(1076)

1370

**CALCAREOUS CLAYSTONE:**med lt gy,med gy i/p,mod calc,sity i/p,tr foram,tr foss,rr ooids,frm-occ mod hd,sbbiky-blky.

1380

98 / 1 / 1

(1094.7)

1390

Survey:1388.77mMD (1101.1mTVD)  
19.17°inc 232.97°az

WOB: 5-25  
TDRPM:80  
MMRPM:176  
SPP: 2150  
FLW: 607

1400

99 / 1 / Tr / Tr

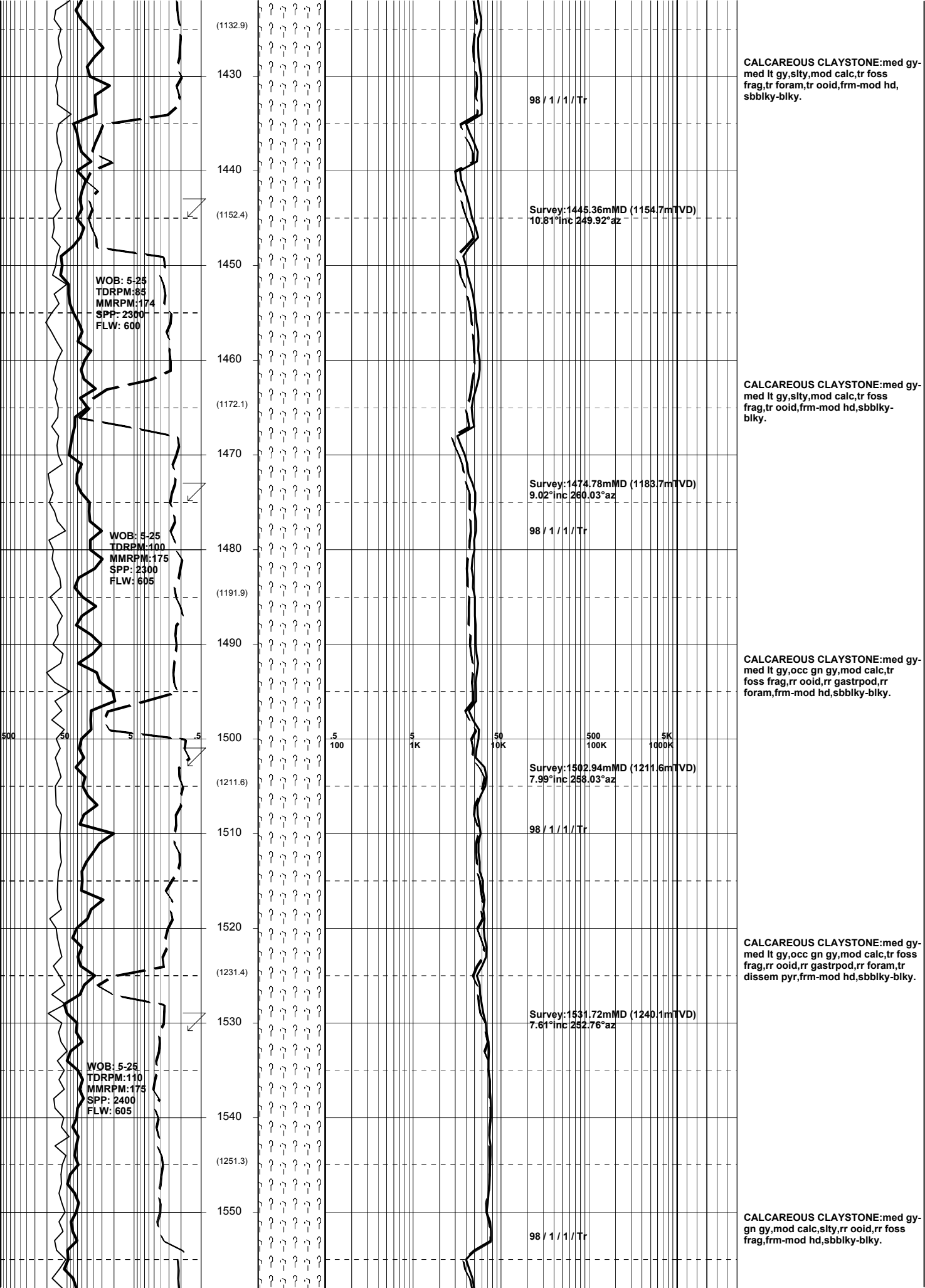
**CALCAREOUS CLAYSTONE:**med gy-med lt gy,sity,mod calc,com foss frag,tr foram,tr ooid,frm-mod hd, sbbiky-blky.

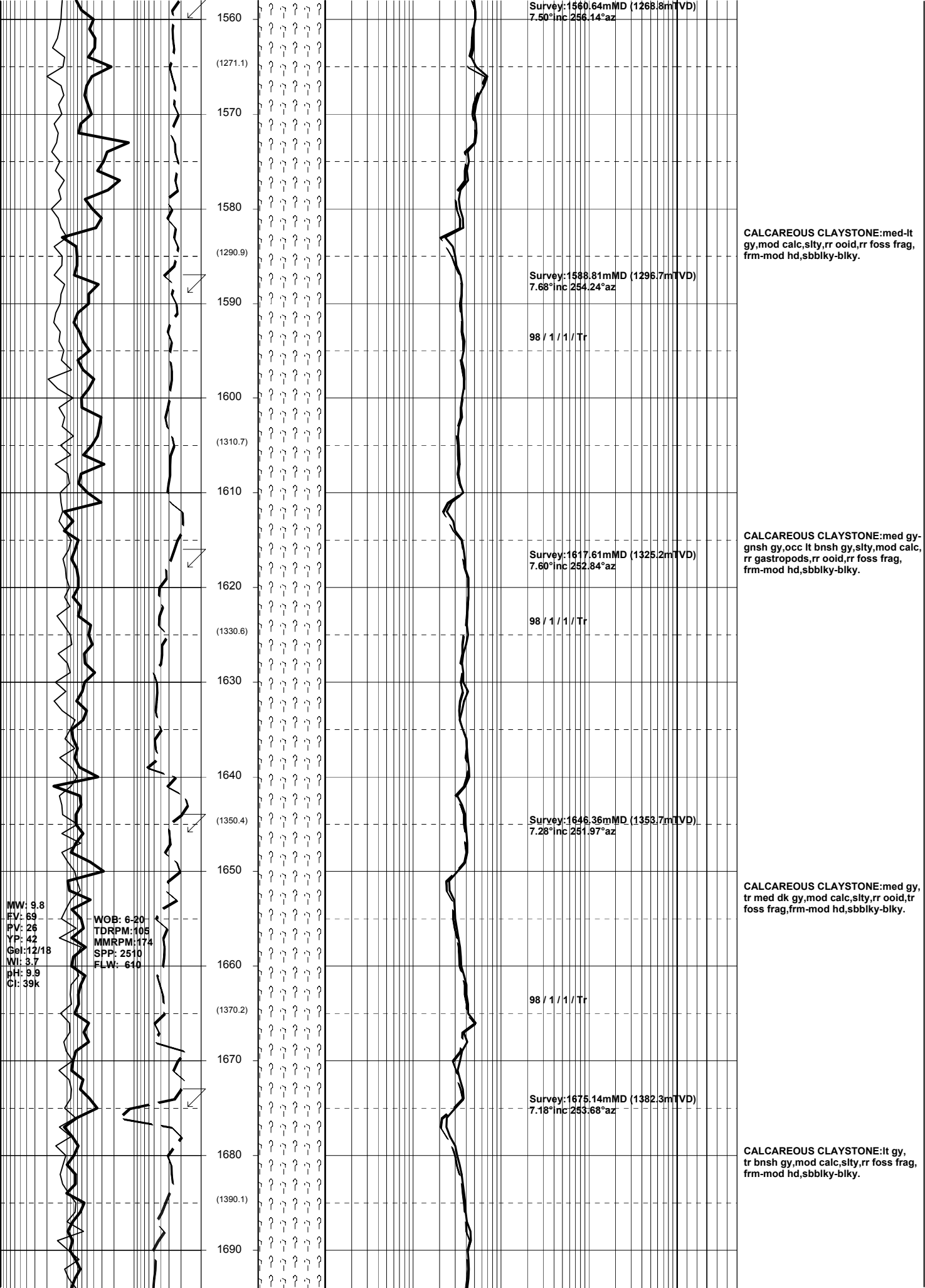
(1113.7)

1410

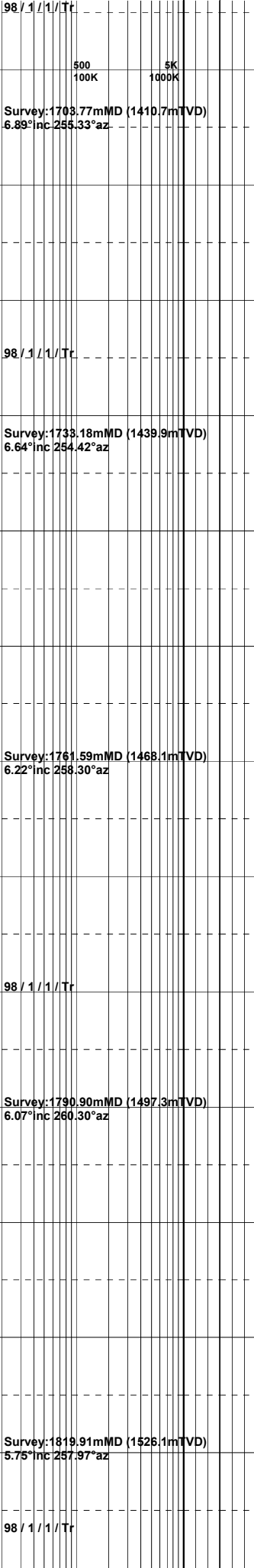
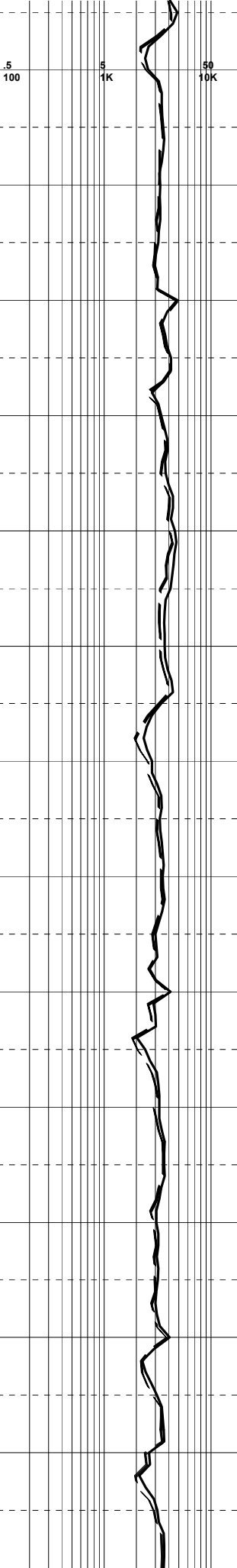
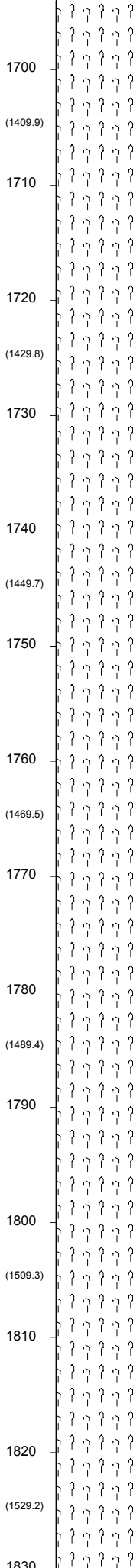
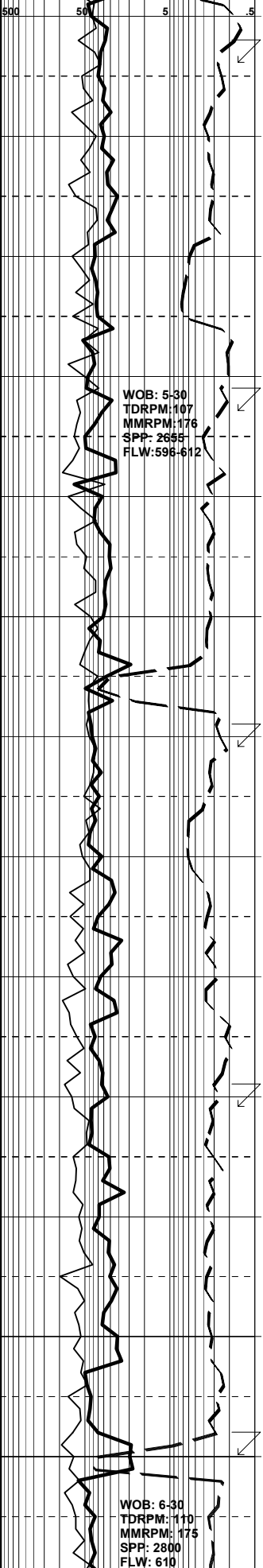
Survey:1417.01mMD (1127.1mTVD)  
15.02°inc 239.52°az

1420





16-10-05



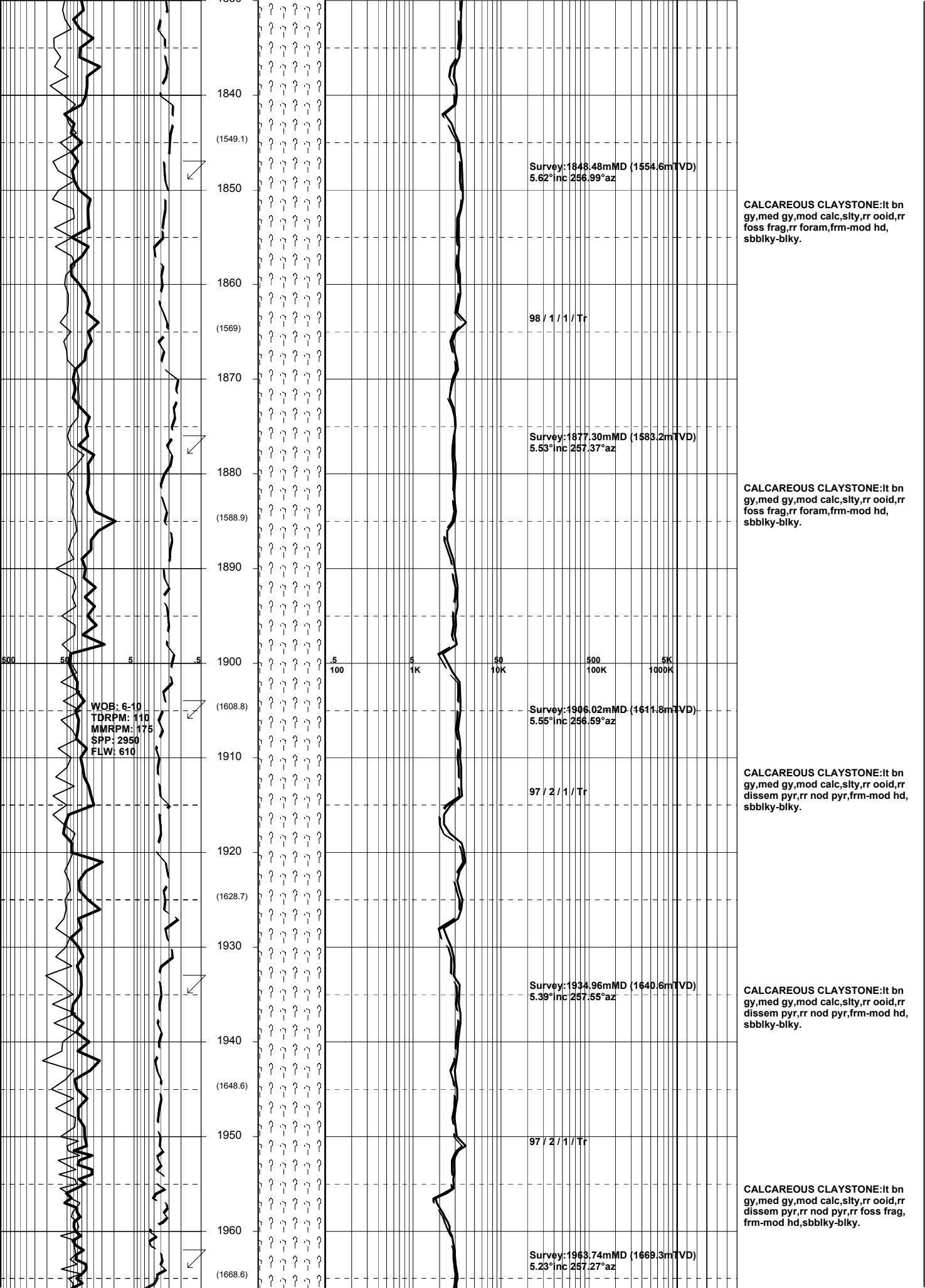
CALCAREOUS CLAYSTONE: it gy, tr bnsh gy, tr med dk gy, mod calc, slty, rr foss frag, tr nod & dissem pyr, tr glauc pell, frm-mod hd, sbblky-blky.

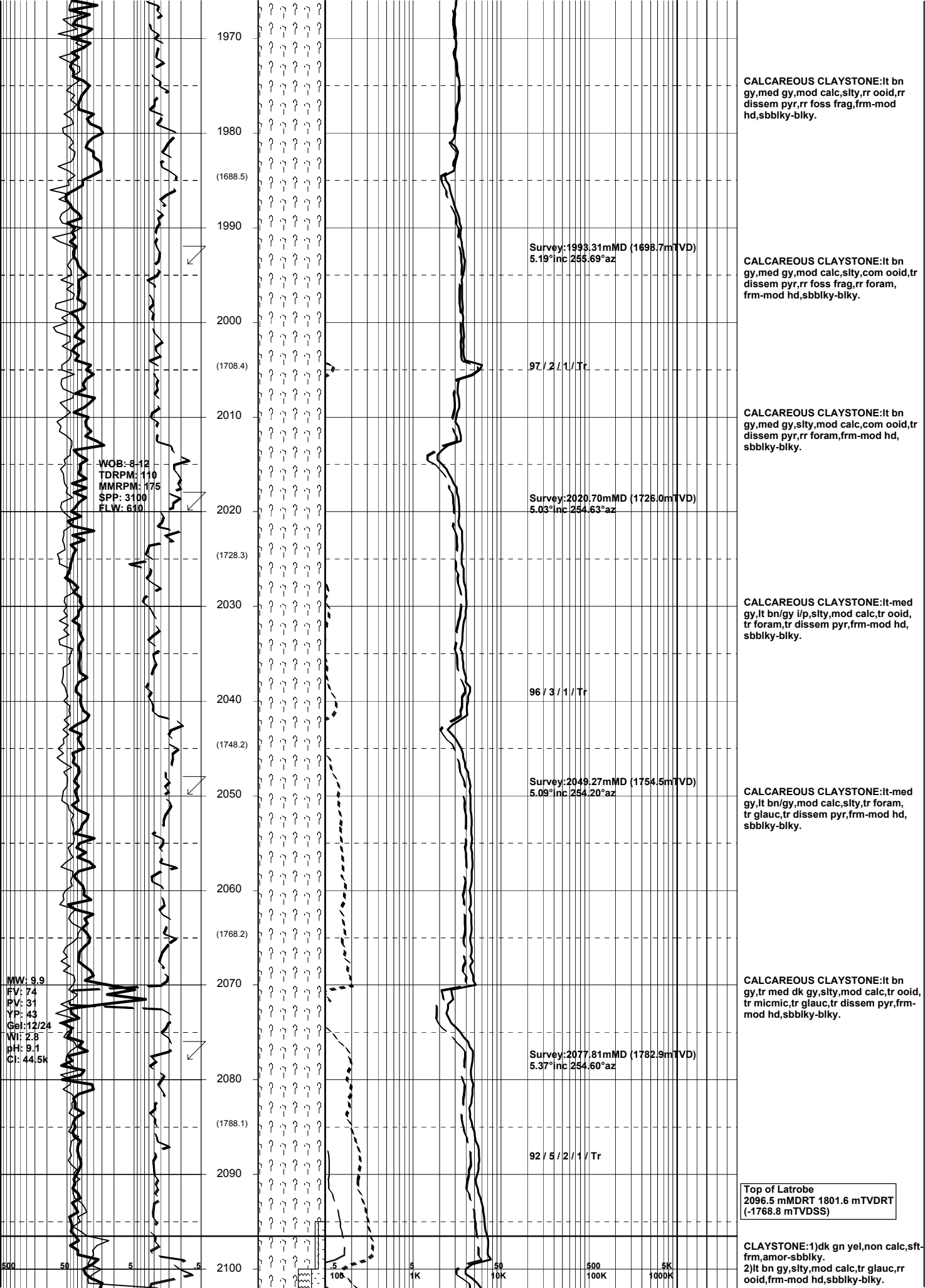
CALCAREOUS CLAYSTONE: it gy, tr bnsh gy, mod calc, slty, rr foss frag, frm-mod hd, sbblky-blky.

CALCAREOUS CLAYSTONE: it gy, occ lt bn/gy, mod calc, slty, tr micmic, tr foss frag, tr ooid, tr foram, frm-mod hd, sbblky-blky.

CALCAREOUS CLAYSTONE: it bn gy, med gy, mod calc, slty, tr ooid, rr foss frag, rr pyr nod, rr dissem pyr, frm-mod hd, sbblky-blky.

CALCAREOUS CLAYSTONE: it bn gy, med gy, mod calc, slty, tr ooid, rr foss frag, rr pyr nod, rr dissem pyr, tr foram, frm-mod hd, sbblky-blky.





1970  
1980  
(1688.5)  
1990  
2000  
(1708.4)  
2010  
2020  
(1728.3)  
2030  
2040  
(1748.2)  
2050  
2060  
(1768.2)  
2070  
2080  
(1788.1)  
2090  
2100

WOB: 6-12  
TDRPM: 110  
MMRPM: 175  
SPP: 3100  
FLW: 610

MW: 9.9  
FV: 74  
PV: 31  
YP: 43  
Gel: 12/24  
W: 2.8  
pH: 9.1  
Cl: 44.5k

Survey: 1993.31mMD (1698.7mTVD)  
5.19° inc 255.69° az

97 / 2 / 1 / Tr

Survey: 2020.70mMD (1726.0mTVD)  
5.03° inc 254.63° az

96 / 3 / 1 / Tr

Survey: 2049.27mMD (1754.5mTVD)  
5.09° inc 254.20° az

Survey: 2077.81mMD (1782.9mTVD)  
5.37° inc 254.60° az

92 / 5 / 2 / 1 / Tr

CALCAREOUS CLAYSTONE: It bn gy, med gy, mod calc, slty, rr ooid, rr dissem pyr, rr foss frag, frm-mod hd, sbbiky-blky.

CALCAREOUS CLAYSTONE: It bn gy, med gy, mod calc, slty, com ooid, rr dissem pyr, rr foram, frm-mod hd, sbbiky-blky.

CALCAREOUS CLAYSTONE: It bn gy, med gy, slty, mod calc, com ooid, tr dissem pyr, rr foram, frm-mod hd, sbbiky-blky.

CALCAREOUS CLAYSTONE: It-med gy, It bn/gy i/p, slty, mod calc, tr ooid, tr foram, tr dissem pyr, frm-mod hd, sbbiky-blky.

CALCAREOUS CLAYSTONE: It-med gy, It bn/gy, mod calc, slty, tr foram, tr glauc, tr dissem pyr, frm-mod hd, sbbiky-blky.

CALCAREOUS CLAYSTONE: It bn gy, tr med dk gy, slty, mod calc, tr ooid, tr micmic, tr glauc, tr dissem pyr, frm-mod hd, sbbiky-blky.

Top of Latrobe  
2096.5 mMDRT 1801.6 mTVDRT  
(-1768.8 mTVDSS)

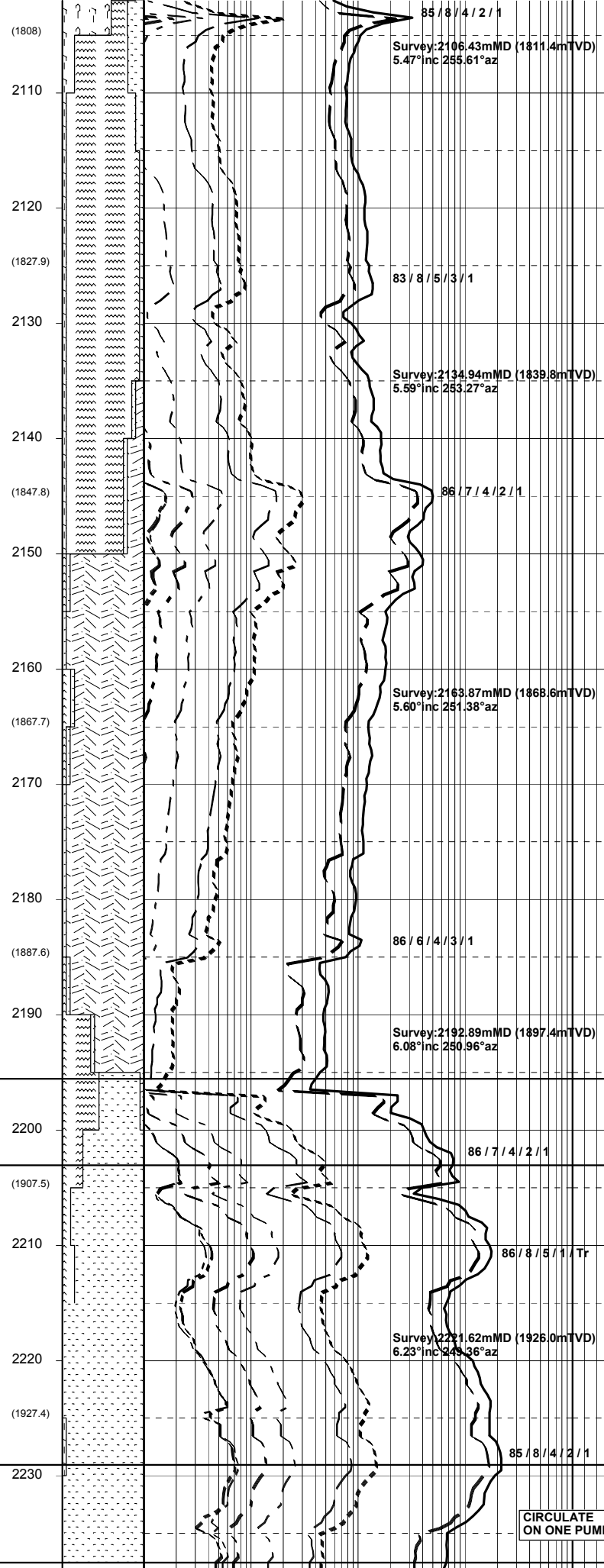
CLAYSTONE: 1) dk gn yel, non calc, sft-frm, amor-sbbiky.  
2) It bn gy, slty, mod calc, tr glauc, rr ooid, frm-mod hd, sbbiky-blky.

500 50 5 5 5 100 5 1K 50 10K 500 5K 100K 1000K



WOB: 5-8  
TDRPM:106  
MMRPM:176  
SPP: 2920  
FLW: 606

WOB: 3-6  
TDRPM:110  
MMRPM:175  
SPP: 2950  
FLW: 610



85 / 8 / 4 / 2 / 1  
SILTSTONE:pl bn,dk yel bn,v aren g/t  
vf SST,sli calc,tr micmic,mod hd,  
blky.

SANDSTONE:wh-pl gn,med gn,vf-f,  
mod wl srt,sa-sr,com glauc mtx,hd  
aggs,ti-v pr vis & inf por,no fluor.

SILTSTONE:mod bn-dk yel bn,v aren  
g/t vf SST,com glauc pelL,tr micmic,  
mod hd,blky.

83 / 8 / 5 / 3 / 1  
SANDSTONE:wh-pl gn,mod gn,vf-f,  
mod wl srt,sa-sr,com glauc mtx,hd  
aggs,ti-v pr inf por,no fluor.

Survey:2134.94mMD (1839.8mTVD)  
5.59°inc 253.27°az  
CLAYSTONE:lt bnsh gy,slty,mod calc  
frm-mod hd,sbbkly-blky.

VOLCANICS#1:(2137m-2161m)  
gysh gn-gysh blue gn,dom chlorite,  
xln,hd,com bit crushed rock flour.

86 / 7 / 4 / 2 / 1  
SILTSTONE:mod bn-dk yel bn,v aren  
g/t vf SST,com glauc pelL,tr micmic,  
mod hd,blky.

2150m-2161m:  
VOLCANICS#1: 15-20%  
VOLCANICS#2: 65-80%

VOLCANICS#2:(2150m-2192m)  
med dk gy-dk gy,mnr dsky bn,f grn,xln  
hd,basic volcanics,50% vf qtz grns.

Survey:2163.87mMD (1868.6mTVD)  
5.60°inc 251.38°az  
SILTSTONE:mod bn-dk yel bn,v aren  
g/t vf SST,com glauc pelL,tr micmic,  
mod hd,blky.

VOLCANICS#2:(2150m-2192m)  
med dk gy-dk gy,mnr dsky bn,f grn,xln  
hd,basic volcanics,50% vf qtz grns.

2180  
SANDSTONE:wh-pl gn,lt gy,vf-f,mod  
wl srt,sa-sr,mod micropyr mtx,occ  
glauc mtx,dom metamorphosed  
quartzite grns,com nod pyr,dom hd  
aggs,ti-v pr inf & vis por,no fluor.

86 / 6 / 4 / 3 / 1  
SILTSTONE:mod bn-dk yel bn,v aren  
g/t vf SST,com glauc pelL,tr micmic,  
mod hd,blky.

Top of Coarse Clastics PRIMARY  
(N-1 gas and oil Sands)  
2195.5 mMDRT 1900.0 mTVDRT  
(-1867.2 mTVDSS)

SANDSTONE:clr-trnsl,crs-dom v crs,  
mod wl srt,sa-sr,wk pyr cmt,tr nod pyr  
dom lse,gen cln,fr-gd inf por.

86 / 7 / 4 / 2 / 1  
Base of Waste  
2203.0 mMDRT 1907.5 mTVDRT  
(-1874.7 mTVDSS)

86 / 8 / 5 / 1 / Tr  
FLUORESCENCE:2185-2215 Tr-2%  
mod bri gn yel npnt mineral fluor,  
no cut.

Survey:2221.62mMD (1926.0mTVD)  
6.23°inc 243.36°az  
SILTSTONE:pl yel bn,v aren g/t vf  
SST,tr micmic,tr glauc,tr dissem  
pyr,mod hd-hd,sbbkly-blky.

CLAYSTONE:lt bl gy,sli calc,slty,  
mod hd-hd,blky.

2220  
SANDSTONE:clr-trnsl,crs-dom v crs,  
occ med,mod wl srt,sa-sr,wk pyr cmt,  
tr nod pyr,dom lse,gen cln,fr-gd inf  
& vis por,no fluor.

85 / 8 / 4 / 2 / 1  
CBF2  
2229.0 mMDRT 1933.3 mTVDRT  
(-1900.5 mTVDSS)

CIRCULATE  
ON ONE PUMP

CBF1  
2237.5 mMDRT 1941.8 mTVDRT

